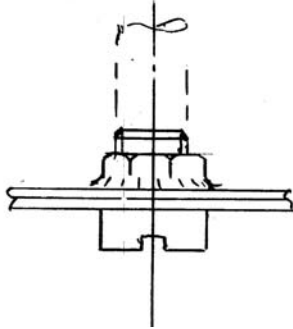


WORKSHOP WANGLE

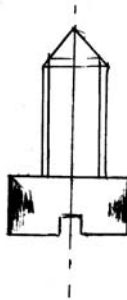
Chassis fixing screws.

There is no need to have a chassis fixing screw any longer than that needed to pass through the nut fixed to the body.



Cut off the excess thread.
It makes fixing time a lot shorter!

To make fitting the screw easier put a point on the screw. The point leads the screw into the hole.



Machine the point by putting the head into the modelling drill and use a file to form the end.

If you can get them use an Allen headed cap screw. The screw can then be inserted on the end of an Allen key that make lining up with hole very easy.